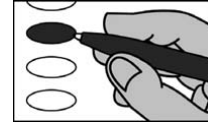


Sample Ballot - Republican Party Primary
Johnston County, North Carolina
March 3, 2026

R0002**BALLOT MARKING INSTRUCTIONS**

- A. With the marking device provided or a black ball point pen, completely fill in the oval to the left of each candidate or selection of your choice as shown.
- B. If you tear, deface or wrongly mark this ballot, return it to request a replacement.



PARTISAN NOMINATIONS	Johnston County Board of Commissioners District 3 (You may vote for ONE)	
US Senate (You may vote for ONE)	<input type="radio"/> Adam Caldwell <input type="radio"/> Chad M. Stewart <input type="radio"/> Mike Rose	
<input type="radio"/> Margot Dupre <input type="radio"/> Richard Dansie <input type="radio"/> Donald M. (Don) Brown <input type="radio"/> Michael Whatley <input type="radio"/> Elizabeth A. Temple <input type="radio"/> Michele Morrow <input type="radio"/> Thomas Johnson	Johnston County Board of Commissioners District 7 (You may vote for ONE) <input type="radio"/> Keith Branch <input type="radio"/> R.S. (Butch) Lawter, Jr.	
US House of Representatives District 13 (You may vote for ONE)	Johnston County Board of Education District 2 (You may vote for ONE) <input type="radio"/> Terry Tippet <input type="radio"/> Jeremy Jenkins	
NC Court of Appeals Judge Seat 1 (You may vote for ONE) <input type="radio"/> Michael C. Byrne <input type="radio"/> Matt Smith	Johnston County Sheriff (You may vote for ONE) <input type="radio"/> Steve Bizzell <input type="radio"/> Randy Ackley	
NC State Senate District 10 (You may vote for ONE) <input type="radio"/> Benton Sawrey <input type="radio"/> Caitlin Marsh	End of Ballot	
NC House of Representatives District 26 (You may vote for ONE) <input type="radio"/> Donna McDowell White <input type="radio"/> Margie Beth Riedel		